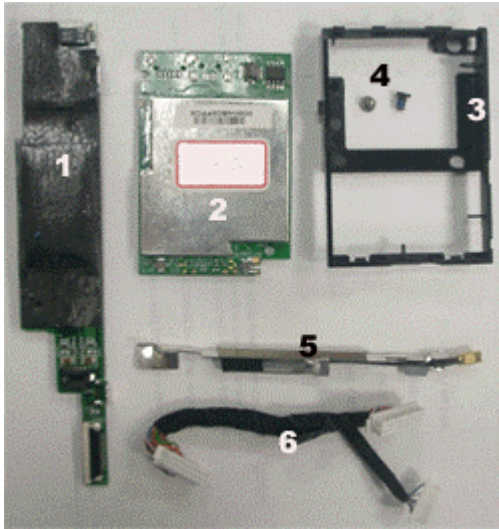


Twinhead

P14 Series Wireless LAN Installation guide

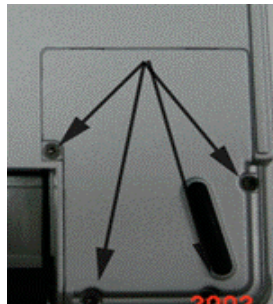


Before you start installing the wireless LAN, please check the WIRELESS LAN kit.

1. PCB Board (included in the optical drive assembly when the machine was ship out before June, 2002).
2. Wireless LAN card
3. Communication Support
4. Screws
5. Antenna
6. Cable



1. Unfasten two screws on the small cover of the bottom case and disconnect the cable.



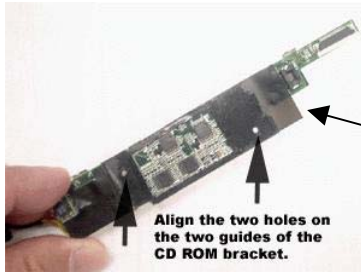
2. Unfasten four (4) screws on the cover



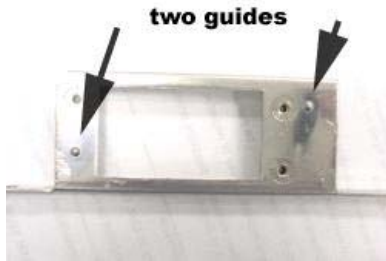
3. Push the COMBO/CDRW drive in the direction of the arrows and then pull out the drive.

Unfasten six screws on the bracket of the optical drive.

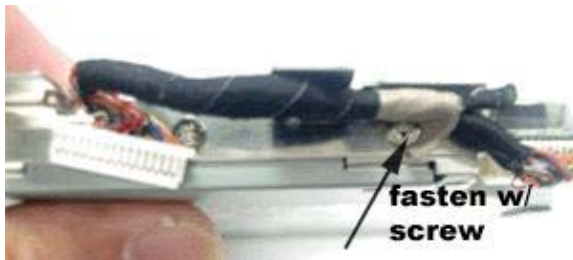
Twinhead



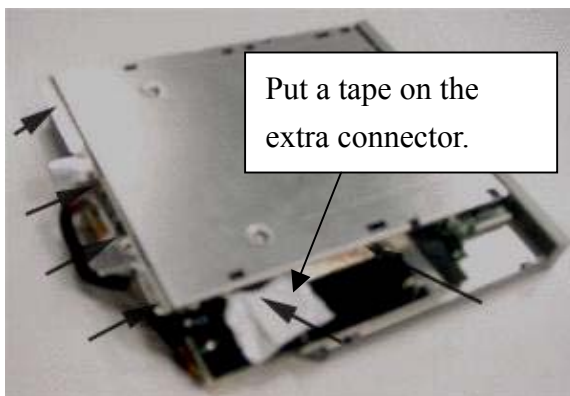
In our early production (before June), this card is installed in the optical drive when being ship out. But this card was removed since it belongs to the GPRS/WIRELESS kit.



4. Check the two holes and align it to the two guides of the CD ROM metal bracket.



5. When fastening the small board on the optical drive, make sure to include the EMI shielding when fastening the screw on the rear side.



6. After fastening all the screws around the optical (CD_ROM/COMBO) drive, put a tape on the extra connector as shown in the picture.

Twinhead

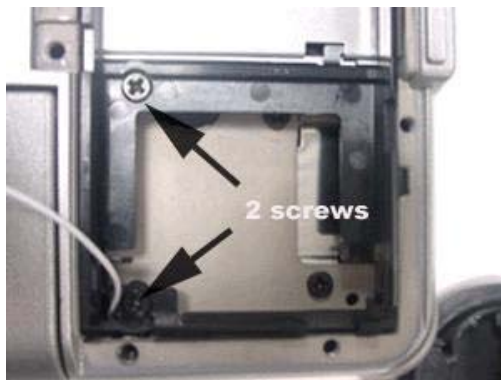


7. Detach the antenna cable from the bottom case.



8. Insert the antenna cable to the communication port (from the rectangular hole and not circular hole) and position the communication support (black plastic frame) properly

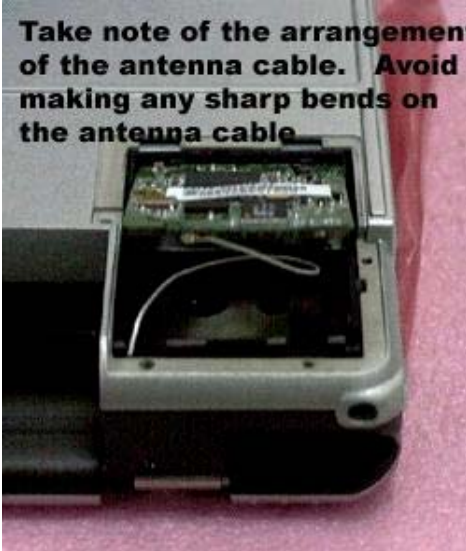
and fasten two screws on it.



9. Connect the antenna cable to the wireless card and wrap an adhesive tape around it.

Twinhead

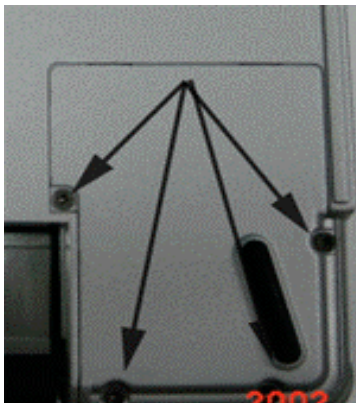
Take note of the arrangement of the antenna cable. Avoid making any sharp bends on the antenna cable



10. Insert the Wireless LAN card on top position as shown in the picture and make sure the antenna cable is not pressed and avoid any sharp bends on the antenna cable.



11. Check all the four snap lock as indicated in the pictures

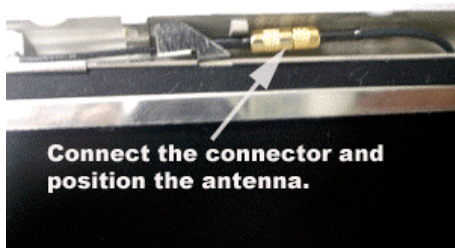


12. Fasten four screws on the communication cover. The Wireless LAN card installation is done.

Twinhead

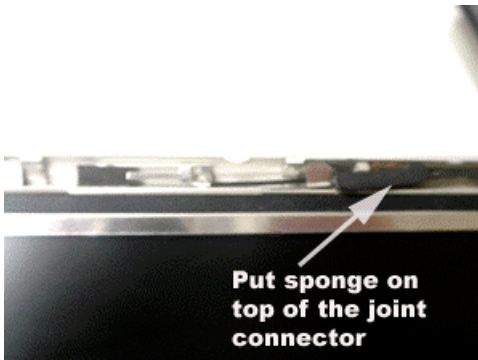


13. On the LCD display panel,
Remove the four rubber stoppers and unfasten four screws underneath.



14. Remove the front cover and connect the two connector and place the antenna properly

Note : *The antenna for Wireless LAN is not the same for GPRS.*



15. Put a black sponge on top of the joint connector.