



Q10 Air

Subnotebook

USER'S GUIDE

Table of contents

Preface	1
Notices	1
Before you start	3
Conventions used in this Manual	3
Safety Precautions.....	3
Things you must remember before working with your computer	7
Introduction.....	10
Preparing your computer.....	10
Front view	11
Left view	13
Right view	13
Bottom view.....	14
Getting started	15
Connecting to a power source.....	15
Connecting the AC adapter	15
Turning your notebook computer on.....	16
Operating on battery power	16
Installing and removing the battery pack.....	17
To install the battery pack:	17
To remove the battery pack:.....	17
Charging the battery pack.....	18
Using the notebook computer	19
Adjusting the LCD screen display.....	19
The Notebook's Hot Key Controls	20
The touchpad.....	21
Power saving modes	22

Removing the battery pack.....	23
Resetting the system	26
Adjusting the brightness.....	26
Using the Windows operating system	27
Control Panel	30
Internet connection	31
Using a modem for connection to Internet (optional).....	31
Using a wired LAN for connection to Internet.....	32
Using Wireless LAN network for connection to Internet.....	33
Bluetooth connection	33
Running BIOS Setup.....	35
Entering the BIOS Setup screen	35
Leaving the BIOS Setup screen.....	35
BIOS action keys.....	36
Modifying the BIOS settings.....	36
Main	36
Info	38
Advanced	38
Security	39
Power	39
Boot.....	40
Exit.....	40
VGA utilities	41
3G connection	45
Troubleshooting	48
Audio problems	49
Hard disk problems.....	50
Display problems.....	52

Keyboard and mouse problems.....	52
CMOS battery problem	53
Memory problems.....	53
PC Card problems.....	54
Performance problems	54
USB2.0 problems.....	55
Specification.....	56

Preface

© Copyright 2008

All Rights Reserved.

The information in this document is subject to change without prior notice in order to improve reliability, design and functionality and does not represent a commitment on the part of the manufacturer.

In no event will the manufacturer be liable for direct, indirect, special, incidental, or consequential damages arising out of the use or inability to use the product or documentation, even if advised of the possibility of such damages.

This document contains proprietary information protected by copyright. All rights are reserved. No part of this manual may be reproduced by any mechanical, electronic, or other means in any form without prior written permission of the manufacturer.

Limitation of Liability

While reasonable efforts have been made to ensure the accuracy of this manual, the manufacturer and distributor assume no liability resulting from errors or omissions in this manual, or from the use of the information contained herein.

Notices

Federal Communications Commission Radio Frequency Interference Statement

This equipment has been tested and found to comply with the limits for a Class B digital device, pursuant to Part 15 of the FCC Rules. These limits are designed to provide reasonable protection against harmful interference in a residential installation. This equipment generates, uses, and can radiate radio frequency energy and if not installed and used in accordance with the instruction manual may cause harmful interference to radio communications. However, there is no guarantee

that interference will not occur in a particular installation. If this equipment does cause harmful interference to radio or television reception, which can be determined by turning the equipment off and on, the user is encouraged to try to correct the interference by one or more of the following measures:

- Reorient or relocate the receiving antenna
- Increase the separation between the equipment and receiver
- Connect the equipment into an outlet on a circuit different from that to which the receiver is connected
- Consult the dealer or an experienced radio TV technician for help

This device complies with Part 15 of the FCC Rules. Operation is subject to the following two conditions: (1) This device may not cause harmful interference, and (2) this device must accept any interference received, including interference that may cause undesired operation.

FCC Caution: Any changes or modifications not expressly approved by the party responsible for compliance could void the user's authority to operate this equipment.

Notice:

Changes or modifications not expressly approved by the party responsible for compliance could void the user's authority to operate the equipment. Shielded interface cables and a non-shielded AC power cord must be used in order to comply with emission limits.

This equipment is to be used with power supply: 40W

There is no internal power supply.

Before you start

Conventions used in this Manual

Use of this manual will help you get the most from your notebook computer.

- If you are an experienced user of computers and/or Microsoft's Windows operating systems, you might find it useful to read the Quick Start Guide that is part of the bundle.
- If you are a less experienced user, you should read through the manual carefully before using your system.

Whether or not you are an experienced user, you should consult the Troubleshooting Chapter if you encounter any problems with your notebook.

Safety Precautions

This section is designed to assist you in identifying potentially unsafe conditions while working with this product. Required safety features have been installed in the computer to protect you from injury. However, you should use good judgment to identify potential safety hazards:

1. Please read these safety instructions carefully.
2. Please keep this User's Manual for later reference.
3. Please disconnect this equipment from AC outlet before cleaning. Don't use liquid or sprayed detergent for cleaning. Use a moist sheet or cloth for cleaning.
4. For pluggable equipment the socket-outlet should be installed near the equipment and be easily accessible.
5. Please keep this equipment from humidity.
6. Lay this equipment on a stable surface when installed. A drop or fall could cause injury.

7. Make sure to use the right voltage for the power source when connecting the equipment to the power outlet.
8. Place the power cord in such a way that people cannot step on it. Do not place anything on top of the power cord.
9. All cautions and warnings placed on the device and its accessories should be noted.
10. If the equipment is not used for a long time, disconnect the equipment from the main power outlet to avoid being damaged by transient overvoltage.
11. Never pour any liquid into any opening, as this could cause fire or electrical shock.
12. Never open the equipment. For safety reason, the equipment should only be opened by qualified service personnel.
13. If one of the following situations arises, get the equipment checked by authorized service personnel:
 - a. The power cord or plug is damaged.
 - b. Liquid has spilled into the equipment.
 - c. The equipment has been exposed to moisture.
 - d. The equipment has not worked well or you cannot get it to work according to the user's manual.
 - e. The equipment was dropped and damaged.
 - f. If the equipment has obvious signs of breakage.
14. Do not leave this equipment in an unconditioned environment: storage temperatures above 60° C (140° f) may damage the equipment.
15. The unit can be operated at an ambient temperature of max. 35° C.
16. The sound pressure level at the operators position according to IEC 704-1: 1982 is equal or less than 70 dB(A).
17. Power Cord Requirements
The power cord set used with the AC adaptor must meet the requirements of the country where you use the AC adaptor, whether it is 100-120 or 200-240 VAC. The

following information explains the requirements for power cord set selection.

- The cord set must be approved for the country in which it is used.
- The appliance coupler must have a configuration for mating with a CEE7/EN60320/IEC 320/NEMA/JIS C 8303 appliance inlet.

A. For U.S. and Canada:

- The cord set must be UL Listed and CSA Certified.
- The minimum specifications for the flexible cord are No. 18 AWG, (2) Type SPT-2, and (3) 2-conductor.

B. For Japan:

- All components of the cord set must bear a PSE mark in accordance with the Japanese DENAN Law.
- The minimum specifications for the flexible cord are .75mm² conductors, (2) Type VCTR or VCTFK, and (3) 2-conductor.
- The cord set must have minimum rated current capacity of 7 A.
- The attachment plug must be a two-pole, grounded type with a Japanese Industrial Standard C8303 (15A, 125 VAC) configuration.

C. For other countries:

- The cord set fittings must bear the certification mark of the agency responsible for evaluation in a specific country.
- The flexible cord must be of a HAR (harmonized) type H03VVH2-F.
- The cord set must have a current capacity of a least 2.5 Amperes and voltage rating of 125 or 250 VAC.

CAUTION: THIS DEVICE IS DESIGNED FOR USE WITH THE FOLLOWING AC ADAPTER MODELS ONLY:

Manufacturer: Li Shin International Enterprise Corp.

Model: 0225C2040 (40W)

Manufacturer: Delta Electronics, Inc.

Model: ADP-40MH AD (40W)

18. When using your telephone equipment, basic safety precautions should always be followed to reduce the risk of fire, electric shock and injury to persons. These precautions includes the following:
 - Do not use this product near water, for example, near a bathtub, washbowl and kitchen sink or laundry tub, in a wet basement or near a swimming pool.
 - Avoid using a telephone (other than a cordless type) during an electrical storm. There may be a remote risk of electric shock from lightning.
 - Do not use the telephone to report a gas leak in the vicinity of the leak.
 - Use only the power cord and batteries indicated in this manual. Do not dispose of batteries in a fire. They may explode. Check with local codes for possible special instructions.
19. Do not use the AC adapter near open water or other liquids. Never spill liquid into the AC adapter.
20. Laser Warning: Laser Class I Product Caution - Invisible laser radiation when open avoid exposure to beam.
21. The optical drive used with this computer is certified as a Class1 laser device according to the U.S. Department of Health and Human Services (DHHS) Radiation Performance Standard and International Standards IEC 60825-1 (EN60825-1). The device is not considered

harmful, but the following precautions are recommended:

- Do not open the unit.
- Avoid direct exposure to the laser beam.
- If the unit requires service, contact an authorized service center.
- Ensure proper use by reading and following the instructions carefully.
- Do not attempt to make any adjustment of the unit.

CLASS 1 LASER PRODUCT

WARNING: Do not attempt to disassemble the cabinet containing the laser. The laser beam used in this product is harmful to the eyes. The use of optical instruments with this product, such as magnifying lenses, increases the potential hazard to your eyes. For your safety, have this equipment serviced only by an authorized service provider.

22. Danger of explosion if battery is incorrectly replaced. Replace only with the same or equivalent type recommended by the manufacturer. Dispose of used batteries according to the manufacturer's instructions. Never remove the battery pack while the power is on as this may result in data loss when the system loses power.
23. The input receptacle is used as the main disconnecting device.

CAUTION: This part is hot. Be careful.

Things you must remember before working with your computer

Let your computer acclimate itself

Your notebook can easily withstand temperature extremes but it doesn't welcome rapid changes in temperature, like going from the cold outdoors to a warm office.

Rapid changes in temperature can cause water droplets to condense inside the case, which can cause the electronic parts inside to be damaged.

After receiving your notebook when it's hot or cold outside, do not to power up the computer immediately, instead let the computer adjust to the room temperature gradually for at least three to four hours.

WARNING: If your system arrives in cold weather, do not apply power to the computer or monitor until they have been allowed to come to room temperature.

Heat, cold, humidity, and glare

Find a suitable place for your computer that's not too hot, too cold, too dark, or too bright. Glare can make it hard to read the screen.

- Try to avoid the computer components from being destroyed if it is over heated, so try to allow plenty of room for air to circulate around the case.
- Do not block the ventilation opening.
- Do not place your computer in direct sunlight.

Suitable place to work

Your computer will run well wherever you're comfortable but extremes of temperature and humidity can be challenging to your system's parts.

There are some things you can tolerate that the computer can't, things like static electricity, dust, water, steam and oil. In case you decide to pull over for roadside computing, try to choose a clean, comfortable work area for your system.

A lithium-ion battery pack will be available when you are traveling.

If you are running your system for the first time on battery power, remove the battery from the package, install it into the system and recharge the battery to fully prepare for service.

Introduction

Preparing your computer



1. Install the battery pack
2. Connecting the AC adapter
3. Opening the display panel
4. Turning your computer on

Knowing your computer

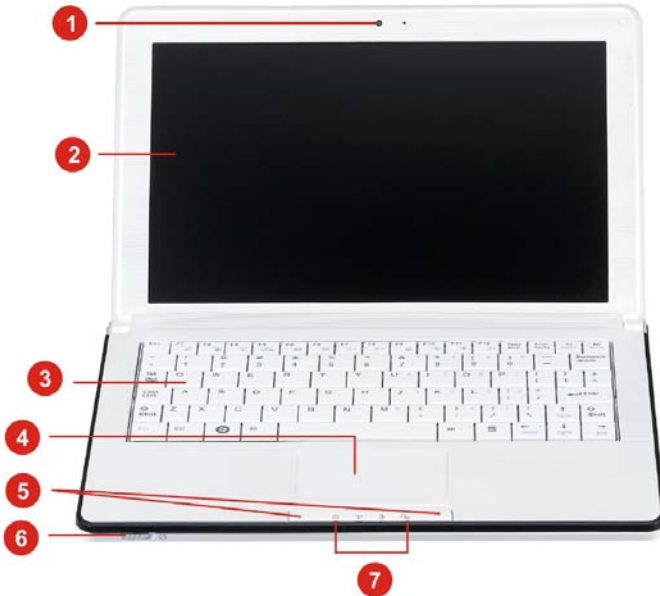
With the LCD screen open, you will see several features important for operating your notebook computer.

WARNING: To avoid damage to the display panel:

1. Try not to slam the display upon closing it.

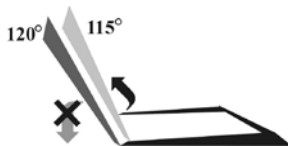
2. Try not to place any object on top when it is closed or open.
3. Be sure the system is turned off or in suspend mode before you close the display panel.

Front view



1. Camera
2. LCD Display

WARNING: This LCD panel can only support a maximum opening of up to 115-120 degrees; please do not push it forcibly.

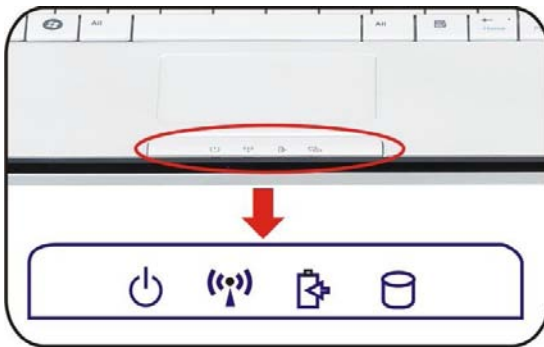





3. Keyboard

NOTE: The keyboard differs for each region.

4. Touchpad
5. Touchpad Buttons
6. Power / Suspend Button
 - Press for 1~1.5 seconds to turn on the system.
 - Press and hold for at least 4 seconds to turn the system off.
 - Press the power / suspend button again to return from suspend mode.
 - Persistent blue light indicates the Power is ON
7. LED Status Indicators

System & Power Status indicators



LED Graphic Symbol	Meaning
	Blue light indicates the system is ON. Blinking blue light indicates the notebook is in Suspend mode.
	Blue light indicates the WLAN / Bluetooth / HSPA is active
	Battery status Charging: Lavender Full: Blue Low: Red



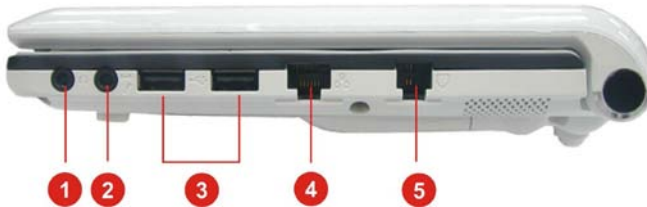
Blue light indicates the hard drive and/or optical drive is being accessed.

Left view



1. Kensington Lock
2. DC In
3. CRT Port
4. USB 2.0 Port
5. 4-in-1 Card Reader (SD/MMC/MS/MS Pro Memory Card)

Right view



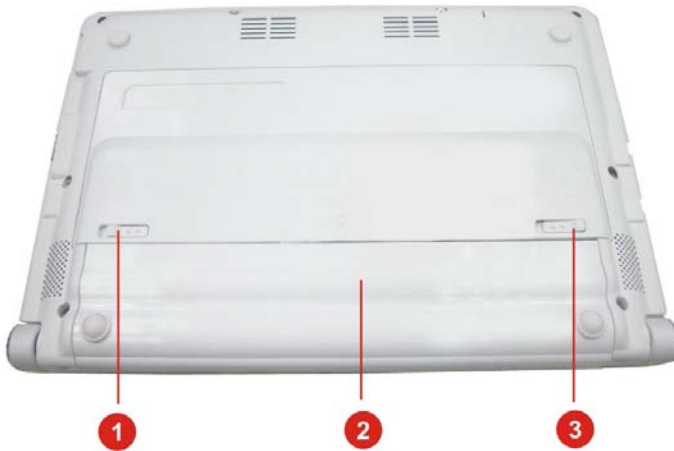
1. Stereo Headphone/SPDIF-out Jack
2. Microphone/Audio Line-in Jack
3. USB 2.0 Port
4. Ethernet / LAN Port
5. Ethernet / LAN Port

NOTE: When using a LAN, please use an EMI Shielding Cable to minimize interference when transmitting.

5. Modem Port (Optional)

NOTE: Always disconnect all telephone lines from the wall outlet before servicing or disassembling this equipment. To reduce the risk of fire use only No. 26 AWG or larger telecommunication line cord.

Bottom view



1. Battery Release Latch
2. Battery Compartment
3. Battery Lock

Getting started

Connecting to a power source

Connecting the AC adapter

A universal AC adapter is provided to supply your computer with power and also charge the computer's battery pack. The adapter's AC input voltage can range anywhere from 100 to 240 volts, covering the standard voltages available in almost every country.

To connect the computer to an external power source:



WARNING: Do not use inferior extension cords as this may result in damage to your notebook. The notebook comes with its own AC adapter. Do not use a different adapter to power the computer and other electrical devices.

Whenever possible, keep the AC adapter plugged into the notebook and an electrical outlet to recharge the battery.

WARNING: Never turn off or reset your notebook while the hard disk is in use and the CD-ROM status icon is lit; doing so can result in loss or destruction of your data. Always wait at least 5 seconds after turning your notebook off before turning it back on; turning the power on and off in rapid succession can damage the notebook's electrical circuitry.

Turning your notebook computer on

Hold the button down for a second or two and release. The Power-On Self Test (POST) runs automatically.

After the POST is completed, the computer reads the operating system from the hard disk drive into computer memory (this is commonly referred to as booting a computer). If your OS (Operating System such as Windows XP. etc) is installed, it should start automatically.

To turn the notebook off, save your work and close all open applications, click on **Start**, then **Shut Down** and select **Shut down the computer** and click "Yes" or press the power button for 4-6 seconds.

Operating on battery power

Your computer comes with a rechargeable battery pack that lets you operate the computer without an external power source.

When the battery pack is fully charged, you can operate the computer under the following conditions:

- The battery pack initially has a full charge.
- No peripheral devices are installed.

WARNING: Only use batteries that are approved by an authorized dealer. All batteries are not the same and therefore should not be treated as such. Using the wrong battery could cause serious damage to your computer and yourself through toxic emissions.

CAUTION: Danger of explosion if battery is incorrectly replaced. Replace only with same or equivalent type recommended by the manufacturer. Discard used batteries according to the manufacturer's instructions or local laws.

Installing and removing the battery pack

To install the battery pack:



To remove the battery pack:





Charging the battery pack

The installed battery pack charges automatically any time the computer is connected to the AC adapter and an external power source. It is a good idea to occasionally discharge the battery pack fully in order to preserve its operating performance.



Using the notebook computer

Adjusting the LCD screen display

The LCD screen display can be adjusted by the following key combinations:

 +  : Changes Display Mode: LCD-only, external monitor only, LCD/external monitor simultaneously

 +  : Increases the brightness level

 +  : Decreases the brightness level.

LCD care

LCD screens are delicate devices that need careful handling. Please pay attention to the following precautions:

- When you are not using the computer, keep the LCD screen closed to protect it from dust.
- If you need to clean your LCD screen, use a soft tissue to gently wipe the LCD surface.
- Do not put your fingers or sharp objects directly on the surface and never spray cleaner directly onto the display.
- Do not press on, or store any objects on the cover when it is closed. Doing so may cause the LCD to break.

External monitor

You can hook up an external monitor through the 15-pin VGA connector. Three configurations are available:

- LCD only

- External monitor only
- LCD and external monitor simultaneously

You can switch between these display configurations by pressing the key combination **[Fn] + [F4]**.

The Notebook's Hot Key Controls



Function Keys (Quick Keys)

Fn + **Esc**: Bluetooth on/off

Fn + **F1**: Enters Suspend Mode













Fn + **F2**: HSPA on/off

Fn + **F3**: WLAN on/off

Fn + **F4**: Changes Display Mode: LCD-only, external monitor only, LCD/external monitor simultaneously

Fn + **F5**: Increases the speaker volume

Fn + **F6**: Decreases the speaker volume

-  +  : Increases the brightness level
-  +  : Decreases the brightness level
-  +  : Enables/Disables the Touchpad
-  +  : Mute the system volume
-  +  : Enters Silent Mode
-  +  : Enables/Disables the camera application

The touchpad

The touchpad is a rectangular electronic panel located just below your keyboard. You can use the static-sensitive panel of the touchpad and slit it to move the cursor. You can use the buttons below the touchpad as left and right mouse buttons.



Touchpad precautions

The touchpad is a pressure sensitive device. Please take note of the following precautions:

- Make sure the touchpad does not come into contact with dirt, liquids or grease.
- Do not touch the touchpad if your fingers are dirty.
- Do not rest heavy objects on the touchpad or the Touchpad buttons.

You can use the touchpad with Microsoft Windows as well as non-Windows applications.

Power saving modes

This section contains information on the notebook's power system, including the AC Adapter, the battery system, recharging the battery, and tips for conserving battery power.

The power system is comprised of two parts, the AC adapter and the battery system. The AC adapter converts AC power from a wall outlet to the DC power required by the computer.

The battery power system

Before using the computer on battery power for the first time, check the battery status icon on the Windows Toolbar to make sure the battery is fully charged.

See Battery Status later in this section for a description and explanation of the Windows Battery icon.

Charging the battery takes about 2.5 hours to charge when the system is in off state. If possible, always charge the battery completely.

NOTE: If you use the battery so frequently that you exceed more than 20 times full charge/discharge cycles per month, we recommend you to perform the Battery Calibration process every 3 months in order to maintain battery life.

Please refer to the topic on Battery Calibration describing how to calibrate your system battery discussed on the latter part of this chapter.

If you discover the battery life is getting shorter, please perform the Battery Calibration process immediately.

Removing the battery pack

To remove the battery pack from its compartment, please refer to Chapter 3: *Inserting and Removing the Battery Pack*.

Preparing the battery pack for use (battery calibration)

Before using the battery pack for the first time, the Smart Battery IC within the battery pack should be calibrated in order to get accurate reporting of remaining battery life status.

To calibrate the battery pack follows the instructions below:

1. Insert the battery into the battery compartment and turn on the notebook. If the battery is completely without power go to the next step. Otherwise, let the battery run down until the battery low-low warning beeps are heard. The system will automatically enter Suspend mode.
2. Turn the notebook off. Connect the AC adapter and let the battery fully recharge. When the battery charge indicator turns off, the battery is fully charged.
3. Turn On the notebook, let the battery run down until the battery is in low-low state and you hear a warning beeps. The system will automatically enter the Suspend mode. You can now connect the AC adapter.
4. The battery pack is now calibrated properly.

In general, using the battery until the low-low battery-warning indicator appears and fully recharges the battery each time (full discharge/charge cycle) will ensure accurate reporting of the battery gauge status.

Automatic battery pack charging function

To charge the battery, while the battery pack is in the notebook, plug the AC adapter into the notebook and an electrical outlet.

The charging time is approximately 2.5 hours when the notebook is turned off and approximately 3.5 hours when the notebook is turned on.

When the battery is fully charged, the battery charge indicator becomes blue.

NOTE: If system runs at heavy loading or in a high temperature environment, the battery may not be fully charged. You need to continue to charge it with the AC adapter plugged in until the charging LED turns blue.

Battery status

Windows XP has an applet in the Control Panel that will display an icon in the Windows taskbar indicating when the notebook is running on battery power or is attached to the AC adapter.

This applet also displays a meter that indicates how much charge is remaining in the battery.

Battery low warning

When the pack initially reaches the Battery Low state approximately 7 ~ 10 minutes of the usable battery life is left.

You will hear an audible beep signal every 15 seconds alerting you to the Battery Low status. When the battery power reaches the Battery Low-Low status the beeping sound will accelerate.

Your battery now has 1 ~ 2 minutes of battery charge remaining.

You must save your data or connect AC power immediately; otherwise, you may lose your data.

Sound	Meaning
Continuous beeping every 5 seconds	Battery Low: Indicates that there are 7 to 10 minutes of battery charge remaining.
Beeping accelerates	Battery Low-Low: Indicates that there are 1 to 2 minutes of battery charge remaining. Save your work and turn off the notebook, or connect the AC adapter.

When there is only one minute of battery charge remaining, the notebook will suspend to the HDD and power off. You should connect AC power and resume, in order to save your work.

Small battery for the Real Time Clock

There is a small built-in battery pack that supplies power to the system in order to maintain certain system information while the power is off.

If the notebook is left without a power source for long period of time, this battery will be exhausted and system information will be lost.

WARNING: Danger of explosion exists if battery is incorrectly replaced. Replace only with the same or equivalent type recommended by the manufacturer.

Dispose of used batteries according to the manufacturer's instructions. Never remove the battery pack while the power is on as this may result in data loss when the system loses power.

Resetting the system

After installing a software application package, you may be prompted to reset the system to load the changed operating environment.

To reset the system, or **reboot**, press the **[Ctrl]+[Alt]+[Delete]** keys simultaneously. This is known as **warm boot**. This key combination acts as **software** reset switch when you encounter hardware or software problems, which lock up the notebook.

If this key combination does not shut down the notebook, you can reset the notebook by using the notebook's power button. Should the notebook lock up for some reason, pressing this button powers the notebook off.

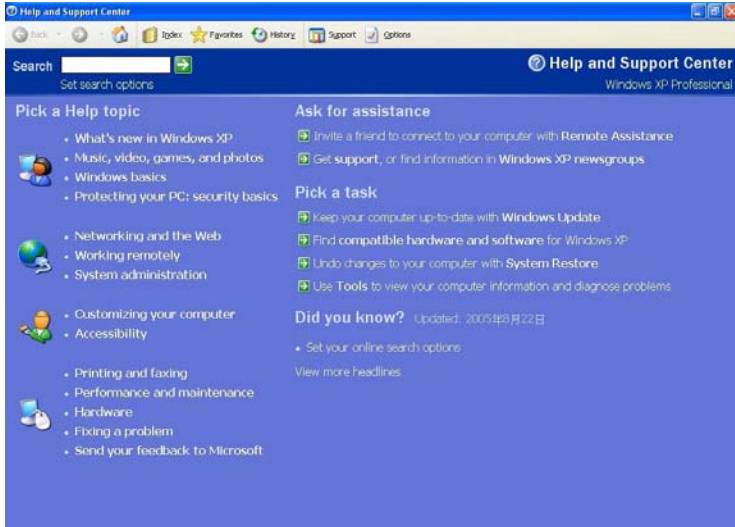
Adjusting the brightness

To adjust the brightness on the LCD screen, press and hold down the **[Fn]** key in the lower left hand corner of the keyboard and press the **[F8]** key to reduce the brightness or **[F7]** to increase the brightness.

Using the Windows operating system

Help for Windows

For Windows XP help, click **Start -> Help and Support** icon will open the dialog box.



Desktop

The desktop environment may vary depending on the software installed on your notebook with different or additional shortcuts being shown.



Recycle Bin

Used for storing deleted files in case you want to recover and save it in your system. The files will only be deleted from the Recycle Bin permanently only if you empty it by right clicking your mouse and select the Empty Recycle Bin.

Start Button

The Start button allows easy access to all Windows programs.



The **Start** menu allows you to adapt and show the programs used most frequently. If you wish to keep an item, right click the item and click **Pin to Start menu**.

Log off will enable the current user to log off and allows a new user to log on.

Turn off computer allows you to shut down, restart, and Stand by modes for power saving purposes.

Taskbar

When you open a program, its icon is displayed at the taskbar for you to conveniently move between programs by clicking the relevant button.

To add or remove toolbars from the taskbar: right click an empty spot on the taskbar, select **Toolbars** -> **choose the toolbar you want to add**.

Notification

The icons that appear here are for quick access to some programs and computer functions that you frequently used. To prevent Windows XP from hiding icons:

From an empty spot on the **Taskbar**, right click your mouse and select the **Properties**, remove the checked mark on the **Auto-hide the taskbar**.



Control Panel

It is in this area that you can change how Windows looks and works. Click **Start -> Control Panel** dialog box. There are two interfaces: **Default** and **Classic View**.



Internet connection

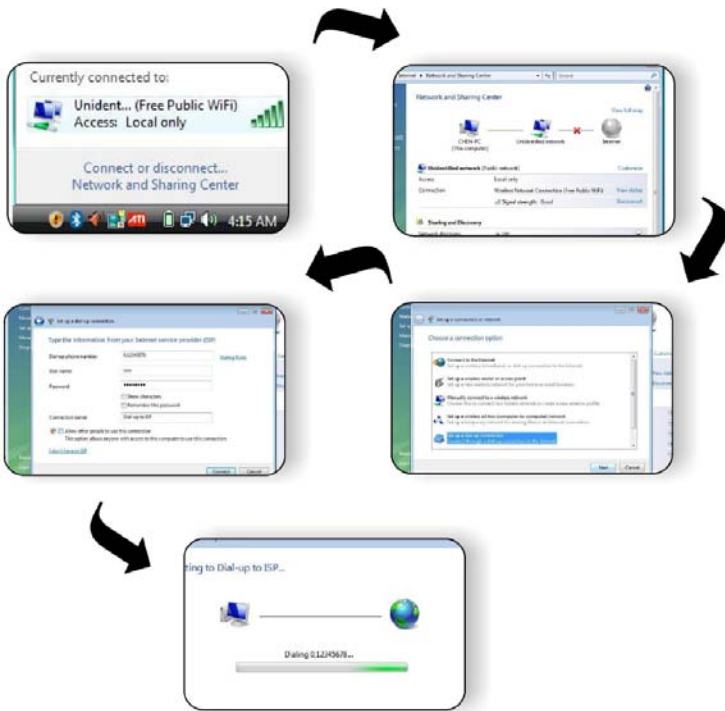
There are numerous ways to connect to the Internet. This may vary depending on the user's working environment as well as system specifications.

- Using a modem and a telephone line (optional)
- Using a wired LAN
- Using a wireless LAN

Using a modem for connection to Internet (optional)

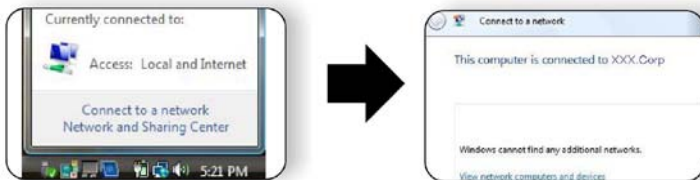
- Use a telephone line to connect to the modem port of your computer. Do not use a digital telephone line.
- Please apply to an Internet Service Provider (ISP) for Internet service in order for you to connect the modem to the Internet and use e-mail.

NOTE: For more detail on the Network key, please refer to your local ISP provider and follow the procedures described in the ISP's Installation Guide to proceed with the installation.

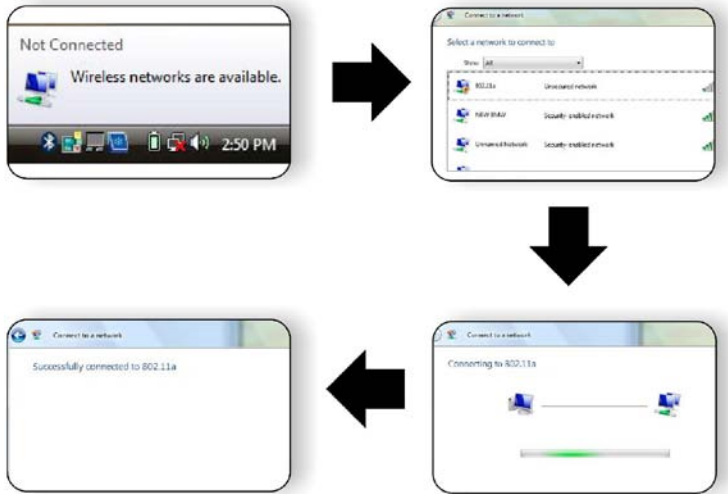


Using a wired LAN for connection to Internet

For you connect to the Internet, a wired LAN environment normally uses the company's LAN or a broadband modem.



Using Wireless LAN network for connection to Internet




Bluetooth connection

Bluetooth is a developing, worldwide, open, short-range radio specification focused on communication between the Internet and Net devices, plus it defines communication protocols between devices and computers.

It connects wirelessly to your world: at home, at work, in motion and while playing.

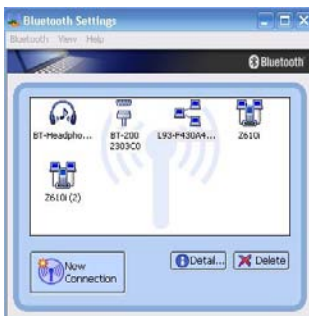
Access the internet or your e-mail account from anywhere, anytime.

 Press on the Bluetooth icon to connect other devices that have this functionality.



This window will be displayed on your screen.

If the system detects any other devices, this will be shown as illustrated in the following Bluetooth settings window:



Running BIOS Setup

The Setup Utility is a hardware configuration program built into your computer's BIOS (Basic Input / Output System). It runs and maintains a variety of hardware functions. It is menu-driven software, which allows you to easily configure and change the settings.

The BIOS contains manufacturer's default settings for the computer's standard operations. However, there are occasions when you may be required to modify the default settings in the BIOS.

The BIOS allows you to set up passwords to limit access to users.

This is an important feature because a great deal of vital information is carried within the computer nowadays. Unauthorized access can be prevented. Later in this chapter, you will learn how to use this security feature.

Entering the BIOS Setup screen

First turn on the power. When the BIOS performs the POST (Power-On Self Test), press DEL key quickly to activate the BIOS Setup Utility.

NOTE: You may need to press DEL key fairly quickly. Once the system begins to load Windows, you have to retry by powering the computer down and on again.

Leaving the BIOS Setup screen

When you have finished modifying the BIOS settings, exit the BIOS. It takes a few seconds to record changes in the CMOS.

BIOS action keys

Function key	Command	Description
ESC	Exit	Leaves a sub-menu to return to the previous menu OR exits the BIOS setup while saving changes.
F1	General Help	Shows the Help Screen.
F10	Save and Exit	Saves changes and reboots the computer.
Tab	Select a field	Selects the next field.
↑	Select an item	Selects the next upper item.
↓	Select an item	Selects the next lower item.
-	Lower value	Selects the previous value within a field.
+	Higher value	Selects the next value within a field.

Modifying the BIOS settings

The BIOS setup main menu is subdivided into sub-menus. Each menu item is described in this section.

Main

Under this menu, you may change time/date and view basic processor and system memory information.

BIOS Setup Utility		
Main	Info	Advanced Security Power Boot Exit
System Overview		Use [ENTER], [TAB] or [SHIFT-TAB] to select a field.
System Time	[15:00:52]	
System Date	[Wed 06/25/2008]	Use [+] or [-] to configure system Time
▶ SATA Port 0	: [Hard Disk]	
Base Memory	: 640KB	
Extended Memory	: 1784MB	
		← Select Screen ↑↓ Select Item +/- Change Field Tab Select Field F1 General Help F10 Save and Exit ESC Exit
V02.61 (C) Copyright 1985-2005, American Megatrends, Inc.		

BIOS Setup Utility		
Main		
Primary IDE Master		Select the type of device connected to the system.
Device	: Hard Disk	
Vendor	: FUJITSU MH22080BH G2	← Select Screen ↑↓ Select Item +/- Change Option F1 General Help F10 Save and Exit ESC Exit
Size	: 80.0GB	
PIO Mode	: 4	
Ultra DMA	: Ultra DMA-5	
Type	[Auto]	
V02.61 (C) Copyright 1985-2005, American Megatrends, Inc.		

Info

BIOS Setup Utility	
Main	Info
BIOS Information BIOS VERSION : 0.0B/02 EC VERSION : 0.13 Processor Genuine Intel ® CPU N270 @1.60GHz Manufacturer : ECS Product Name : G101L	← Select Screen ↑↓ Select Item F1 General Help F10 Save and Exit ESC Exit
V02.61 (C)Copyright 1985-2005, American Megatrends, Inc.	

Advanced

BIOS Setup Utility						
Main	Info	Advanced	Security	Power	Boot	Exit
Advanced Execute-Disabit Bit Capability [Enabled]		When disabled, force the XD feature flag to always return 0				
		← Select Screen ↑↓ Select Item +- Change Option F1 General Help F10 Save and Exit ESC Exit				
V02.61 (C)Copyright 1985-2005, American Megatrends, Inc.						

Security

BIOS Setup Utility						
Main	Info	Advanced	Security	Power	Boot	Exit
Supervisor Password :Not Installed User Password :Not Installed Change Supervisor Password Change User Password			Install or Change the password. ← Select Screen ↑↓ Select Item Enter Change F1 General Help F10 Save and Exit ESC Exit			
V02.61 (C)Copyright 1985-2005, American Megatrends, Inc.						

Power

BIOS Setup Utility						
Main	Info	Advanced	Security	Power	Boot	Exit
Power Setting LCD panel power saving [Enabled]			Long Battery Life Mode ← Select Screen ↑↓ Select Item + Change Option F1 General Help F10 Save and Exit ESC Exit			
V02.61 (C)Copyright 1985-2005, American Megatrends, Inc.						

Boot

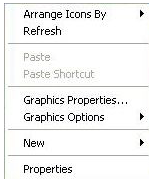
BIOS Setup Utility		
Main	Info	Advanced Security Power Boot Exit
LAN Remote Boot	[Disabled]	LAN BOOT HELP
1st Boot Device	[USB:Generic- Multi]	
2nd Boot Device	[SATA:PM-FUJITSU MH]	
		← Select Screen ↑↓ Select Item +- Change Option F1 General Help F10 Save and Exit ESC Exit
V02.61 (C)Copyright 1985-2005, American Megatrends, Inc.		

Exit

BIOS Setup Utility		
Main	Info	Advanced Security Power Boot Exit
Save Changes and Exit		Exit system setup after saving the changes.
Discard Changes and Exit		
Load Optimal Defaults		F10 key can be used for this operation.
Load Failsafe Defaults		
		← Select Screen ↑↓ Select Item Enter Go to Sub Screen F1 General Help F10 Save and Exit ESC Exit
V02.61 (C)Copyright 1985-2005, American Megatrends, Inc.		

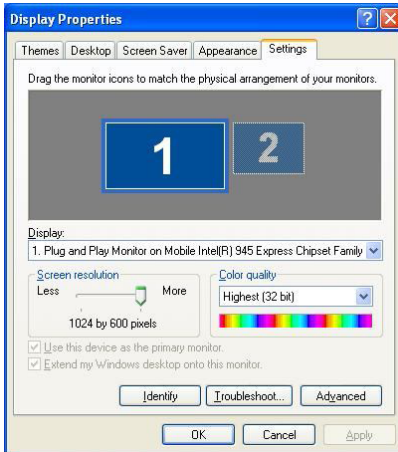
VGA utilities

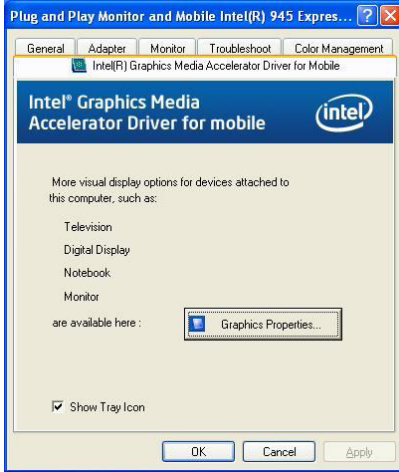
You can click the touchpad or mouse right button and select the **Properties** item.



Select the **Display Settings** option to enter its window display.

Click on the **Advanced Settings** tab to enter **Plug and Play Monitor on Mobile Intel R 945 Express Chipset Family** window display.

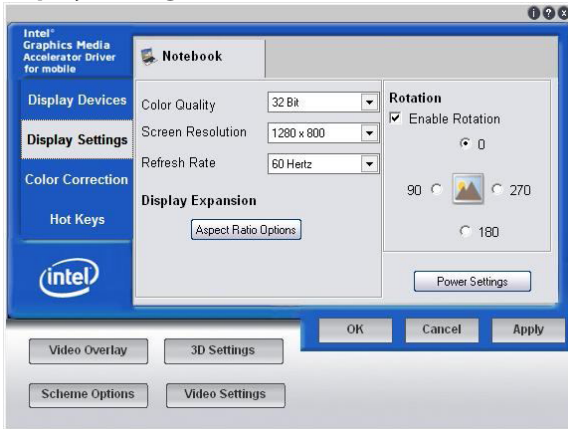




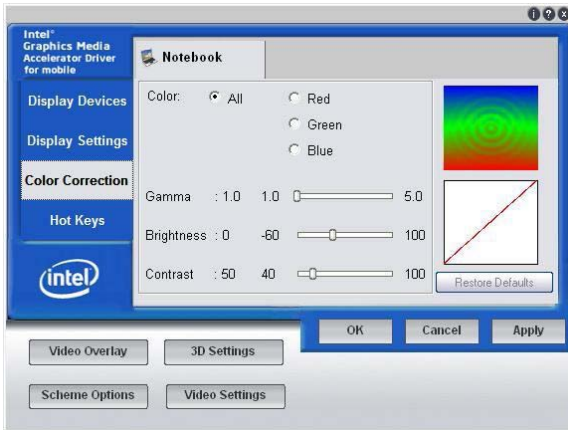
Display Devices



Display Settings



Color Correction

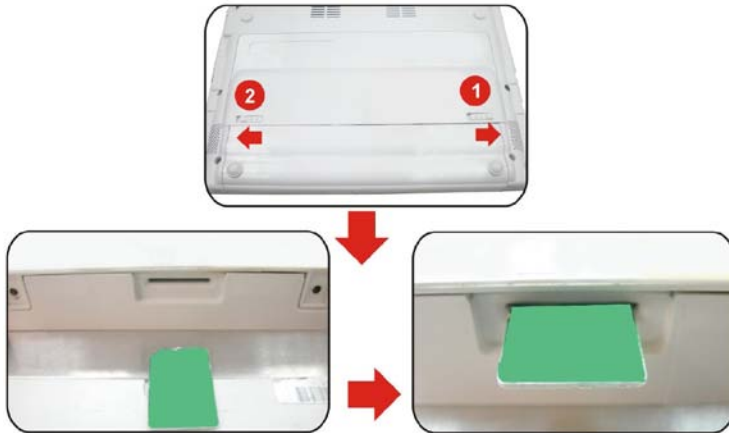



Hot Keys



3G connection

3G is the third generation of mobile phone standards and technology. 3G enable users a wide range of more advanced service while achieving greater network capacity through improved spectral efficiency.



Press on the 3G icon  to bring the 3G application and then press the hot key combination **Fn + F2** to establish your default 3G connection.

NOTE: To disconnect the SIM card from the system, we suggest you to disable the 3G connection by pressing **Fn + F2** to exit the 3G application.



To disconnect, click on the **Disconnect** icon will exit the 3G application.

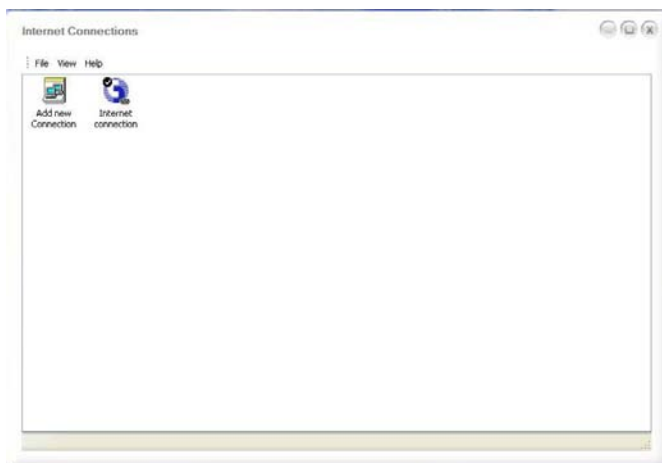


Another way of closing the 3G connection is by clicking on the **Menu** button.



Select the **Setting** and click on the **Internet Connections** to enter the connection window display.

Click on the **Add new Connection** in case you want to connect to another telecom company.



Troubleshooting

Your computer has been fully tested and complies with the system specifications before shipping. However, incorrect operations and/or mishandling may cause problems.

This chapter provides a reference for identifying and correcting common hardware and software problems that you may encounter.

When you encounter a problem, you should first try to go through the recommendations in this chapter. Instead of returning the computer and waiting for repair, you may easily solve the problems by considering the following scenarios and possible solutions. If the error continues, contact your reseller for service information.

Before taking further actions, consider the following suggestions:

- Check to see if the problem persists when all the external devices are removed.
- Check to see that the green light indicator on the AC adapter is lit.
- Check to see that the power cord is properly plugged to the wall outlet and to the computer.
- Check to see if the power indicator of the computer is on.
- Check to see if your keyboard is operational by pressing and holding any key.
- Check for any incorrect or loose cable connections. Make sure the latches on the connectors latch securely on to the receptor end.
- Be sure you have not performed an incorrect setting on the hardware devices in the BIOS Setup utility. A faulty setting may cause the system to misbehave. If you are not sure of the changes you made, try to restore all the settings to factory defaults.

- Be sure all the device drivers are installed properly. For example, without the audio driver properly installed, the speakers and microphone will not work.
- If external devices such as USB camera, scanner, printer do not function correctly when connected to the system, it is usually the device's own problem. Consult the device's manufacturer first.
- Some software programs, which have not gone through rigorous coding and testing, may cause problems during your routine use. Consult the software vendor for problem solving.
- Legacy peripheral are not plug-and-play capable. You need to restart the system with these devices powered up and connected first.
- Be sure to go to BIOS SETUP and load DEFAULT SETTING after BIOS re-flash.
- Be sure the Quick Key Lockout Switch on the bottom of the computer is not engaged; otherwise the quick keys will not work.

Audio problems

No speaker output

- Software volume control is turned down in Microsoft Sound System or is muted. Double-click the speaker icon on the lower right corner of the taskbar to see if the speaker has been muted or turned down all the way.
- Most audio problems are software-related. If your computer worked before, chances are software may have been set up incorrectly.
- Go to [Start > Settings > Control Panel] and double-click the Sounds and Audio Devices icon. In the Audio page, make sure that the audio codec mentioned in the specifications is the default playback device.

Sound cannot be recorded

- You will need to plug-in an external microphone to the microphone connector to record sound.
- Double-click the speaker icon on the lower right corner of the taskbar to see if the microphone has been muted.
 - Click Options and select Properties.
 - Select Recording and click the OK button.
 - After you click the OK button, the recording volume control panel will appear.
- Go to [Start > Settings > Control Panel] and double-click the Multimedia icon (or Sounds and Audio Devices icon). In the Volume or Audio page, make sure that the audio codec mentioned in the spec is the default recording device.

Hard disk problems

The hard disk drive does not work or is not recognizable

- If you had just performed a hard disk upgrade, make sure the hard drive connector is not loose and the hard disk drive is also correctly seated. Remove it and reinsert it firmly, and restart your PC.
- The new HDD may need to be partitioned and reformatted. O/S and drivers will need to be re-installed as well.
- Check the hard disk indicator LED. When you access a file, the LED lamp should light up momentarily.
- The new HDD may be defective or is not compatible.
- If your computer has been subjected to static electricity or physical shock, you may have damaged the disk drive.

The hard drive is making abnormal whining noises

- You should back up your files as soon as possible.

- Make sure the source of noise is indeed from the hard drive and not the fan or other devices.

The hard disk drive has reached its maximum capacity

- Run Disk Cleanup utility in Windows. [Start > All Programs > Accessories > System Tools > Disk Cleanup] The system will prompt you for what to do.
- Archive files or programs that you no longer use by moving them to an alternative storage medium (floppy disk, optical record-able disk, etc.) or uninstall programs that you no longer use.
- Many browsers store files on the hard drive as a cache to speed up the performance. Check the program's Online Help for instructions on decreasing the cache size or on removing temporary Internet files.
- Empty the Recycle Bin to create more disk space. When you delete files, Windows saves them to the Recycle Bin.

The hard disk takes longer to read a file

- If you have been using the drive for a period, the files may be fragmented. Go to [Start > Programs > Accessories > System Tools > Disk Defragmenter] to perform a disk defragmentation. This operation may take a while.
- Interrupt requests or problems with other hardware devices may have occupied the CPU and therefore slows down the system performance.

The files are corrupted

- Run the Error-checking utility in Windows to check the HDD. Double-click My Computer. Right-click C: and select Properties. Click Check Now in Error-checking in Tools.

Display problems

The display panel is blank when the system is turned on

- Make sure the computer is not in the Standby or Hibernate suspend modes. The display is turned off to conserve energy in these modes.

The screen is difficult to read

- The display resolution should at least be set to at least 1024x600 for optimal viewing.
- Go to [Start > Settings > Control Panel] and double-click the Display icon.
- Under the Settings page, set screen resolution to at least 1024x600.

The screen flickers

- It is normal if the display flickers a few times during shutting down or powering up.

Keyboard and mouse problems

The built-in touch pad performs erratically

- Make sure there is no excess perspiration or humidity on your hand when using the touch pad. Keep the surface of the touch pad clean and dry.
- Do not rest your palm or wrist on the surface of the touchpad while typing or using the touchpad.

The built-in keyboard accepts no input

- Please try to make sure the system didn't hang up and is still working.

The characters on the screen repeat while I type

- You may be holding the keys down for too long while you're typing.
- Keep the keyboard clean. Dust and dirt under the keys could cause them to stick.
- Configure the keyboard to wait longer before the auto repeat feature starts. To adjust this feature, Go to [Start > Settings > Control Panel], and double-click the Keyboard icon. A dialogue box shows up with the adjustable settings for the keyboard.

CMOS battery problem

A message: CMOS Checksum Failure displays during the booting process or the time (clock) resets when booting

- Try to reboot the system.
- If the message: CMOS Checksum Failure appears during the booting procedure even after rebooting, it may indicate failure of the CMOS battery. If so, you need to replace the battery. This battery normally lasts two to five years. The battery is of type CR2032 (3V). Send the battery to the dealer for replacement.

Memory problems

The POST does not show an increased memory capacity when you have already installed additional memory

- Certain brands of memory module may not be compatible with your system. You should ask your vendor for a list of compatible DIMM.
- The memory module may be defective.

The O/S issues an insufficient memory error message during operation

- This is often a software or Windows-related problem. A program is draining the memory resources.
- Close the application and programs you're not using and restart the system.

PC Card problems

NOTE: Some systems may not have the PC Card Slot option.

PC Cards do not function

- Make sure you have properly installed the driver for the card.
- Consult the card's manual or contact the vendor for troubleshooting.

The PC Card cannot be recognized

- Make sure the card is fully inserted; the outer end of the card should be even with the edge of the computer.
- Remove and insert the PC Card again.
- Make sure there is no IRQ conflict with the card. See Windows online help for solving IRQ conflicts.
- Reboot the computer and see if the problem persists.
- The card may be defective. Try the card on another system, if possible.

Windows crashes or freezes when you remove the PC Card

- Make sure you have deactivated the PC Card before removing it. Double-click the Safely Remove Hardware icon at the lower right corner of the task bar and select the card you wish to stop. When you click <Close>, in few seconds Windows will prompt you to remove the card.

Performance problems

The computer becomes hot

- In a 35°C environment, certain areas of the computer's back-case are expected to reach 50°.
- Make sure the air vents are not blocked.
- If the fan does not seem to be working at high temperature (50 ° Celsius and up), contact the service center.
- Certain programs that are processor-intensive may increase the computer temperature to a degree where the computer automatically slows down its CPU clock to protect itself from thermal damage.

The program appears stopped or runs very slowly

- Press CTRL+ALT+DEL to see if an application is still responding.
- Restart the computer.
- This may be normal for Windows when it is processing other CPU-intensive programs in the background or when the system is accessing slow-speed devices such as floppy disk drive.
- You may be running too many applications. Try to close some applications or increase system memory for higher performance.
- The processor may have been overheated due to the system's inability to regulate its internal heat. Make sure the computer's ventilation grills are not blocked.

USB2.0 problems

The USB device does not work

- Check the settings in the Windows Control Panel.
- Make sure you have installed the necessary device drivers.
- Contact the device vendor for additional support.

Specification

O.S.

- Supports Windows XP OS with SATA HDD
- Supports Linux Linpus Lite 9.4 with uSSD

CPU

- Supports Intel Atom CPU single core

Memory

- DDRII 533/667 support
- RAM socket * 1
- System DDRII up to 1 GB total

Core logic

- Intel Cantiga 945GSE+ICH7M

VGA

- Intel 945GSE

Audio codec

- Realtek ALC662

Card reader (4 in 1)

- Support SD/MMC/MS/MS Pro Memory Card
- USB2.0 interface

LAN controller

- Supports 10/100 Mbps.
- MII interface

Wireless LAN

- Mini Card w/ PCI-E interface
- IEEE 802.11 B/G support w/ 1 Antenna

Camera CCD

- Support 1.3M & 0.3M Camera

Keyboard

- 80/81 keys KB support

Pointing device

- PS2 Touch Pad with 2 buttons

LCD

- 10.2"/8.9 SWVGA, 1024X600 resolution
- LED panels support

HDD

- HDD for 2.5" 9.5mm SATA support
- SHSC: Suspensory HDD Shockproof Capability

Battery pack

- HYB cell
 - 6 cells, 3S2P, 4400mAh/ 11.1V
 - 4 cells, 4S1P, 2200mAh/ 14.8V
 - Li-Polymer-6 cells, 3600mAh/11.1V

AC adapter

- Automatics Voltage adjustment between 100 and 240VAC 50/60Hz, 40 Watts

Speaker/MIC

- Built-in 2 speakers
- Internal Microphone support

BIOS

- Supports PnP, ACPI 3.0
- Support external USB flash memory card boot up.
- Be with AMI BIOS and 1MB flash ROM

Power Management (default: Silent mode)

- Smart Power II Power Management

Physical outline

- Dimension: 259mm x 180mm x 26~35mm
- Weight:
 - 1.4kg with 6 cell battery with HDD + 10.2 LCD
 - 1.2kg with 4 cell battery with uSSD + 8.9 LCD

EMI

- CE/FCC

RF

- CE, R&TTE report/document

Safety

- CB report/ETL/CCC